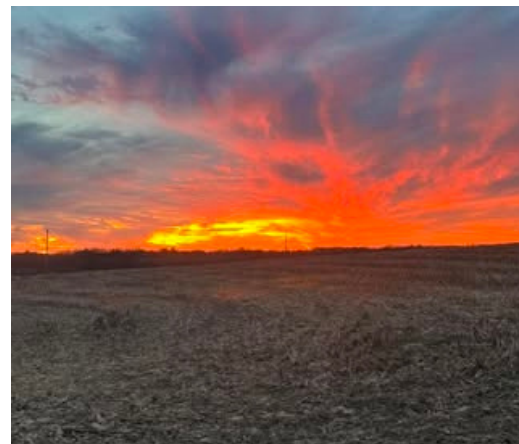


July 2025

# AGRICULTURE AND NATURAL RESOURCES NEWSLETTER



## WASHINGTON COUNTY EXTENSION OFFICE

245 Corporate Drive  
Springfield, KY 40069  
(859) 336-7741  
Fax: (859) 336-7445  
<http://ces.ca.uky.edu/washington>

Scan the QR code to see  
upcoming events!



Agents go LIVE each Tuesday on 100.9  
at 8:20ish, or you can listen for timely  
tips throughout the week!



### Cooperative Extension Service

Agriculture and Natural Resources  
Family and Consumer Sciences  
4-H Youth Development  
Community and Economic Development

### MARTIN-GATTON COLLEGE OF AGRICULTURE, FOOD AND ENVIRONMENT

Educational programs of Kentucky Cooperative Extension serve all people regardless of economic or social status and will not discriminate on the basis of race, color, ethnic origin, national origin, creed, religion, political belief, sex, sexual orientation, gender identity, gender expression, pregnancy, marital status, genetic information, age, veteran status, physical or mental disability or reprisal or retaliation for prior civil rights activity. Reasonable accommodation of disability may be available with prior notice. Program information may be made available in languages other than English. University of Kentucky, Kentucky State University, U.S. Department of Agriculture, and Kentucky Counties, Cooperating.

Lexington, KY 40506



**An Equal Opportunity  
Organization**

# IMPORTANT DATES

## August

2<sup>nd</sup>: Back to School Ag Bash, Loretto Motherhouse  
14<sup>th</sup>-24<sup>th</sup>: Kentucky State Fair  
21<sup>st</sup>: KSU Agri-Technology & Vertical Farming, Frankfort

## September

8<sup>th</sup>: Rinse and Return  
8<sup>th</sup>: BQCA Trainings  
9<sup>th</sup>: Sheep and Goat Meeting, Lebanon  
10<sup>th</sup>: Beef Industry Margins & Beef Demand, Zoom  
17<sup>th</sup>: Differences in this Cattle Cycle & Import Dynamics, Zoom  
22<sup>nd</sup>: Goat Health and Care, Webinar  
23<sup>rd</sup>: Mechanical Weed Control Field Day, Lexington

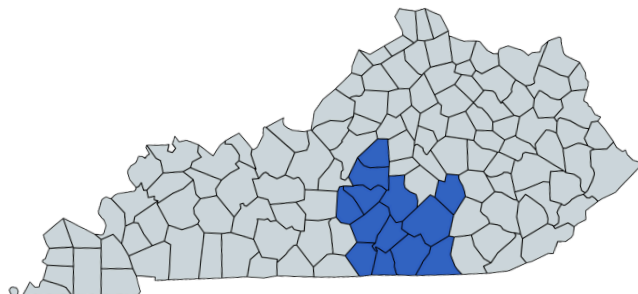
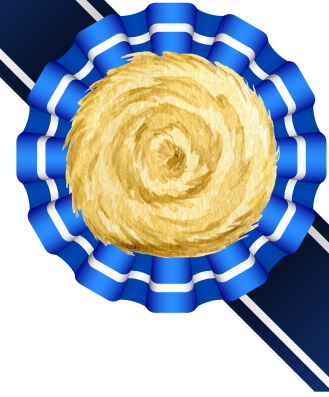
I X H R F P T O F P N B L H  
O D A N V K J A F Q H A A T  
S M P U F M U C L F U Y H W  
M B B E G N W I F N C I O O  
A Q A B W U N S N O R R Q R  
L J N O I P S A N D D K F R  
L S A G D A R T T P U K M A  
G U N T R E E H A E I H O B  
R B A G M S U F V L L P H L  
A M E M T R F R D H R J K E  
I K U Y S R G M A J A L B E  
N S C D D W I T S F K Z E H  
I Z A T S T A T E F A I R W  
T Y Z W Z E G A F L A F L A

## August Word Search



SMALL GRAIN  
THIRD THURSDAY  
SUMMER ANNUAL  
WHEELBARROW  
HAY CONTEST  
STATE FAIR  
ALFALFA  
BANANA  
AUGUST  
GRASS  
WITS

# ***SOUTH-CENTRAL KY*** *Hay Contest*



**Entries are due September 30<sup>th</sup>, 2025 to the Washington County Extension Office.**

## Hay & Silage Classes:

- Alfalfa
- Alfalfa/Grass: Samples in this class must contain 20-80% grass.
- Mixed: Samples in this class must contain 10-80% legume.
- Grass: Samples in this class must contain less than 10% legume.
- Small Grain: Winter wheat, winter rye and oat.
- Summer Annual: Sorghum/sudangrass, millet, teff, annual lespedeza, and soybean.

Each producer may submit as many samples as they wish in as many categories as they wish. However, only their best sample in each category will be considered for awards.

**NEW THIS YEAR:** Samples will be sent to Ward by the Extension Office for FREE. Results take 1-2 weeks to return.

Washington County scored very well in several categories last year and placed in the top three in four different categories! We hope to have a repeat of this again this year!



## Sheep and Goat Considerations

- Hot, humid weather may increase the incidence of respiratory and digestive diseases. Observe animals closely. Animals that have diarrhea or are not eating normally should be evaluated and treated immediately.
- Looking to increase your conception rates? Check out this month's blog post on Flushing.

## Timely Forage Tips

- Do NOT graze cool-season pastures closer than 3 to 4 inches. This will help to conserve soil moisture and prevent overheating of the crowns.
- If drought conditions limit pasture growth, close off pastures and feed hay in a sacrifice area.
- Graze warm season annuals or perennials to allow cool season grasses to recover and to avoid endophyte-infected fescue.
- After first good rain in August, seed winter annuals (such as small grains, ryegrass, crimson clover, and brassicas) for late fall and early spring grazing.
- Plant alfalfa after first good rain in August to allow sufficient size going into winter and reduce potential for sclerotinia damage.
- Consider renovation of cool-season grass pastures that have thinned.
- In mid-August to early September, exclude livestock from pastures to be stockpiled and apply 60 lb N/A and any needed lime, P and K.

## Beef Timely Tips

- Provide shade and water! Cattle will need shade during the hot part of the day.
- Check water supply frequently - as much as 20 gallons may be required by high producing cows in very hot weather.
- Select pastures for stockpiling. Remove cattle and apply nitrogen when moisture conditions are favorable. Stockpiled fescue can be especially beneficial for fall-calving cows after calving. Reproductive rates are highest in fall-calving cows grazing stockpiled fescue.
- Avoid working cattle when temperatures are extremely high - especially those grazing high-endophyte fescue. If cattle must be handled, do so in the early morning.
- Do not give up on fly control in late summer, especially if fly numbers are greater than about 50 flies per animal. You can use a different "type" of spray or pour-on to kill any resistant flies at the end of fly season.
- Keep a good mineral mix available at all times. The UK Beef IRM Basic Cow-Calf mineral is a good choice.
- Cattle may also be more prone to eat poisonous plants during periods of extreme temperature stress. They will stay in "wooded" areas and browse on plants that they would not normally consume. Consider putting a roll of hay in these areas and/or spraying plants like purple (perilla) mint that can be toxic.
- Take soil samples to determine pasture fertility needs. Fertilize as needed this fall.



# STATEWIDE EVENTS

If you are interested in any of the state wide events more information can be found on Facebook, the University of Kentucky Animal Sciences Website, or by contacting the office!



**KENTUCKY STATE  
UNIVERSITY**

## THIRD THURSDAY THING

### Agri-Technology & Vertical Farming

August 21, 2025 10:00 AM

**Harold R. Benson Research and  
Demonstration Farm**  
1525 Mills Lane Frankfort, KY 40601

THIS INSTITUTION IS AN EQUAL OPPORTUNITY PROVIDER

## All About Goats! Webinar

JOIN EXTENSION AND INDUSTRY PROFESSIONALS FOR THE FALL 2025 SERIES



### Goat Health and Care Sept. 22

During this session, Extension Specialist, Dr. Brady Campbell, will review proper care for goats of all ages and explain how to help keep them healthy and continue production.

### Farm Business and Management Oct. 6

Extension Specialist, Eric Richer, and Extension Educator, Pressley Buurma, will help guide participants in farm management strategies and provide options for enterprise budgeting and record keeping as it relates to goat production.

### Goat Processing Oct. 20

Throughout this presentation, Extension Specialist, Dr. Lyda Garcia, will explain the cuts of a carcass and how to process a goat at home.

### Livestock Marketing Nov. 3

Join us as Extension Specialist, Garth Ruff, discusses the ins and outs of the goat market. He will also discuss how to market goats to fill the current wants and needs of the customers.

### Hay and Grain Production Nov. 17

Throughout this session, Extension Educator, Jordan Penrose, will present tips and tricks on hay and grain production for goats as well as what type of crops would work best for your production system.

### Coyote Management Dec. 1

This session is going to focus on how to manage interactions between coyotes and goats. Experts will also explain the current status of coyote research in Ohio.

### Open Forum: Ask Me Anything Dec. 15

Have a burning question that was not answered during one of our past webinar sessions? Join Extension Educators and Specialists to get your questions answered!

Webinars are hosted via Zoom (7-8 p.m. EST). Register at:  
[go.osu.edu/allaboutgoats25](https://go.osu.edu/allaboutgoats25)



Ohio State University Extension is part of The Ohio State University College of Food, Agricultural, and Environmental Sciences.

CFAES provides research and related educational programs to clientele on a nondiscriminatory basis. For more information, visit [cfaes.osu.edu/hondiscrimination](https://cfaes.osu.edu/hondiscrimination). For an accessible format of this publication, visit [cfaes.osu.edu/accessibility](https://cfaes.osu.edu/accessibility).



## KENTUCKY MECHANICAL WEED CONTROL FIELD DAY

**UK Horticulture  
Research Farm**  
Lexington, KY

**SEPT 23**  
8 AM - 4 PM EST

"Investing in new equipment without seeing it in action is daunting. This was a great opportunity to get up close and learn about the finer points of various tools."

-KY Farmer, Midwest Mechanical Weed Control Field Day



MIDWEST  
TRANSITION TO ORGANIC  
PARTNERSHIP PROGRAM

OK

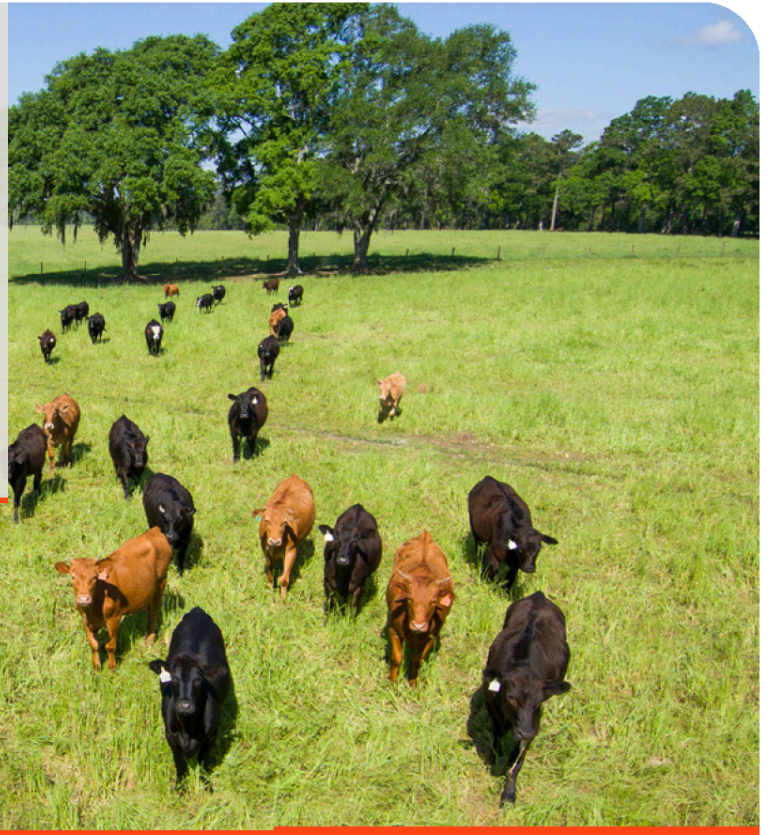
GLACIAL  
DRIFT

Center for Crop  
Diversification  
The Ohio State University



# SURVIVING HIGH PRICE\$

## WEBINAR SERIES



**WEDNESDAYS: 2-3 P.M. ET | 1-2 P.M. CT | 12-2 P.M. MT | 11-12 P.M. PT**

Join us for a 6-week series to learn about & discuss the uniqueness of the current cattle cycle so we can better understand how to help our producers manage their operations through record-high prices!

Speakers will include Extension economists and specialists from across the United States.

DATES	TOPICS
September 10	Industry Margins & Beef Demand
September 17	Differences in this Cattle Cycle & Import Dynamics
October 1	Risk Management & What To Do With Profits
October 8	Operation Resiliency & Contract Grazing
October 22	Integrated Crop-Livestock Systems & How Not to Need a Hay Baler
October 29	Defining “Better Genetics” & Economics of Reproduction Strategies

Visit this link or scan the QR Code to register: [bit.ly/register-for-SHPwebinar](https://bit.ly/register-for-SHPwebinar)



**UF** IFAS Extension  
UNIVERSITY OF FLORIDA

**MISSISSIPPI STATE UNIVERSITY**  
EXTENSION

**OSU** EXTENSION

**COOPERATIVE EXTENSION**  
College of Agriculture, Forestry and Life Sciences

**UTIA** INSTITUTE OF  
AGRICULTURE  
THE UNIVERSITY OF TENNESSEE

**UK** Martin-Gatton  
College of Agriculture,  
Food and Environment  
Cooperative Extension Service

**extension**  
ALABAMA A&M & AUBURN UNIVERSITIES

**UNIVERSITY OF  
ARKANSAS**

**TEXAS A&M  
AGRI LIFE  
EXTENSION**

The University of Florida is an Equal Opportunity Institution. The University of Florida is committed to providing universal access to all of our events. For disability accommodations such as sign language interpreters and listening devices, please contact Hannah Baker, [h.baker@ufl.edu](mailto:h.baker@ufl.edu), 863-374-7051 at least [2 week in advance]. Advance notice is necessary to arrange for some accessibility needs.

# Beef Quality and Care Assurance



**September 8th**

10:00 AM - 11:00 AM

6:00 PM - 7:00 PM



**(859)336-7741**

Call to register.

This training is **FREE**.



**Washington County Extension Office**

245 Corporate Dr, Springfield



BQCA is **required** if you purchase an item in the large animal category of a cost-share program. Therefore, it does **not count as the educational requirement**.

---

## Rinse and Return



**September 8th**

1:00 PM - 2:00 PM

**What to do:** Bring your empty pesticide containers for disposal. Containers need to be triple rinsed, booklets torn off and tops removed.



# Banana Split Breakfast Bowl

## Directions:

1. Wash hands with warm water and soap, scrubbing for at least 20 seconds.
2. Place one banana in bottom of small bowl.
3. Spread half of the yogurt on top of split banana.
4. Add half of the strawberries and pineapple tidbits.
5. Top with half of the granola, nuts and berries.
6. Repeat with other banana half and remaining toppings.
7. Refrigerate leftovers within 2 hours.

## Ingredients

- 2 medium bananas, peeled and sliced lengthwise
- 1/2 cup low-fat vanilla yogurt, divided
- 1/2 cup diced or sliced strawberries, divided
- 1/2 cup pineapple tidbits-drained, divided
- 4 tablespoons granola, divided
- 2 tablespoons of nuts (optional)
- 6 blueberries, raspberries, blackberries or cherries (optional)



At the Extension  
Office

Cooperative Extension Service  
Washington County  
245 Corporate Drive  
Springfield, KY 40069  
(859) 336-7741  
taylor.graves@uky.edu

*Taylor Graves*



August  
Bee Keepers Meeting  
August 4<sup>th</sup> at 6:30 PM  
Wheelbarrow Series



7<sup>th</sup>: Wine Cap Mushrooms  
14<sup>th</sup>: Fall Vegetable Garden  
21<sup>st</sup>: Fall Cover Crops

WITS Workout

1<sup>st</sup>: Giddy for Green  
15<sup>th</sup>: Bright Ideas